

Beethoven: Symphony No. 5

23

Third Movement: Letter C leading into the Finale

Recommended Tempo: ♩. = 84/88 ♩ = 88/92 in Finale

General Style: Allegro

TIMPANI

Allegro

324 **C** 332

pp

336 1-30 2 3 4 5 6 7 8 9 10 11 12

sempre pianissimo

348 13 14 15 16 352 17 18 19 20 21 22 23 24

360 25 26 27 28 29 30 1-8 2 3 4 5 6 7 8

cresc. *attacca*

Allegro

ff

7 9 11

13 14 16

20 21

Xilofono

Allegro ♩ = 126-132

Bass Drum
Military Drum
Triangle
Cymbals
Tambourine
Sleigh Bells

CD392

LIEUTENANT KIJÉ

1764⁽³⁾

1

Suite Symphonique

CANBERRA SCHOOL OF MUSIC

I

CANBERRA SCHOOL OF MUSIC
LIBRARY C

dry sound
SNARE DRUM

THE BIRTH OF KIJÉ

S. Prokofieff, Op. 60

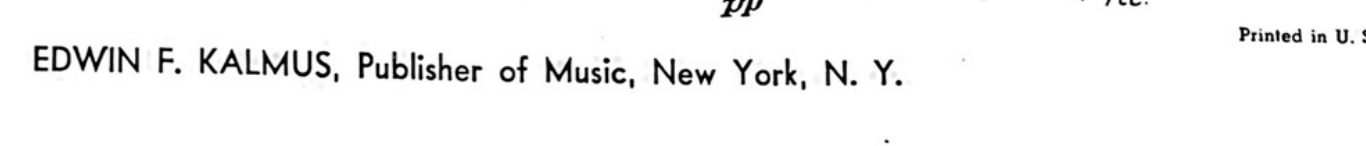
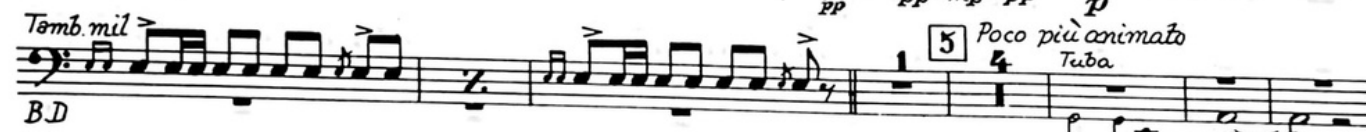
♩ = 120

Andante assai

Gr. op.

Doppio movimento

Tamb. mil. Solo



EDWIN F. KALMUS, Publisher of Music, New York, N. Y.

Printed in U. S. A.